



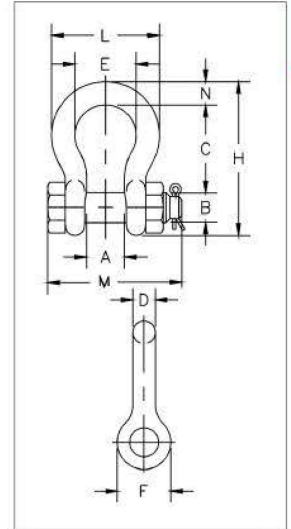
G-2130A
Grade 8



- Forged alloy steel, Quenched & Tempered, with bow and bolt.
- Meets or exceeds all requirements of Grade 8 shackles.
- Working Load Limit permanently shown on every shackle.
- Hot-dip galvanized.
- Shackles can be RFID equipped.
- Meets or exceeds all requirements of ASME B30.26, including identification, ductility, design factor, proof load, and temperature requirements. Importantly, G-2130A meet other critical performance requirements, including impact properties, and material traceability not addressed by ASME B30.26.
- Shackles can be furnished proof tested with certificates to designated standards, such as ABS, DNV, Lloyds, or other certification when requested at time of order.
- Type Approval and certification in accordance with DNV 2.7-1 offshore containers.
- Shackles are Quenched & Tempered and meet DNV impact requirements of 42 Joules (31 ft-lb) at -40° C (-40° F).
- G-2130A Bolt Type Anchor shackles with thin head bolt – nut with cotter pin. Meets the performance requirements of Federal Specification RR-C-271G, Type IVA, Grade B, Class 3, except for those provisions required of the contractor.

SHACKLES

1



G-2130A Alloy Bolt Type Anchor Shackles Grade 8

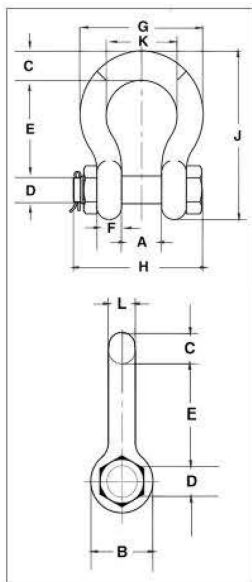
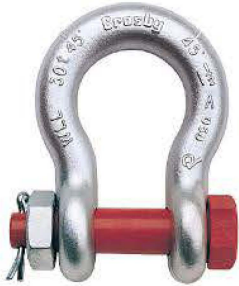
Nominal Size (in)	Working Load Limit (t)*	Stock No.	Weight Each (kg)	Dimensions (mm)										Tolerance (+ / - mm)	
				A	B	C	D	E	F	H	L	M	N	C	A
1/2	2	1219472	.36	20.6	16.0	47.8	12.7	33.3	30.2	83.5	58.5	71.1	12.7	3.30	1.50
5/8	3.25	1219491	.62	26.9	19.1	60.5	16.0	42.9	38.1	106	74.5	90.4	17.5	6.35	1.50
3/4	4.75	1219516	1.23	31.8	22.4	71.5	19.1	51.0	46.0	126	89.0	105	20.6	6.35	1.50
7/8	6.5	1219534	1.79	36.6	25.4	84.0	22.4	58.0	53.0	148	102	122	24.6	6.35	1.50
1	8.5	1219552	2.28	42.9	28.0	95.5	25.4	68.5	60.5	167	119	137	26.9	6.35	1.50
1-1/8	9.5	1219578	3.75	46.0	31.8	108	28.7	74.0	68.5	190	131	150	31.8	6.35	1.50
1-1/4	12	1219598	5.31	51.5	35.1	119	31.8	82.5	76.0	210	146	170	35.1	6.35	1.50
1-3/8	13.5	1219614	7.18	57.0	38.1	133	35.1	92.0	84.0	233	162	183	38.1	6.35	3.30
1-1/2	17	1219632	8.62	60.5	41.4	146	38.1	98.5	92.0	254	175	196	41.1	6.35	3.30

8:1 Design Factor. Maximum Proof Load is 2 times the Working Load Limit. For Working Load Limit reduction due to side loading applications, see Warnings & Applications..





G-2140 / S-2140



- Quenched & Tempered.
- Alloy bows, alloy bolts.
- Forged alloy steel 2 through 250 metric tons. Cast alloy steel 400 metric tons.
- Meets performance requirements of Grade 8 shackles.
- Working Load Limit is permanently shown on every shackle.
- 30, 40, 55, and 85 metric ton shackle bows are available galvanized (G) or self colored (S) with bolts that are galvanized and painted red.
- Size 3/8 inch is mechanically galvanized.
- 120, 150, 175 metric ton shackle bows are hot-dip galvanized; bolts are Dimetcoated and painted red.
- 200, 250, 300, 400 metric ton shackle bows are Dimetcoated; bolts are Dimetcoated and painted red.
- Sizes 1-1/2 and larger are RFID equipped.
- Approved for use at -40° C (-40° F) to 204° C (400° F).
- Shackles are Quenched & Tempered and can meet DNV impact requirements of 42 Joules (31 ft-lb) at -20° C (-4° F).
- Crosby COLD TUFF® shackles that meet the additional requirements of DNV rules for certification of lifting applications - loose gear are available.
- Shackles 200 metric tons and larger are provided as follows:
 - Serialized bolt and bow
 - Material certification (chemical)
 - Magnetic particle inspected.
 - Certification must be requested at time of order.
- Meets or exceeds all requirements of ASME B30.26 including identification, ductility, design factor, proof load and temperature requirements. 2140 shackles meet other critical performance requirements including impact properties and material traceability, not addressed by ASME B30.26.
- Type Approval certification in accordance with ABS 2016 Steel Vessel Rules and 2016 ABS Guide for Certification of Lifting Appliances. Certificates are available when requested at time of order and may include additional charges.
- G-2140 meets the performance requirements of Federal Specification RR-C-271G, Type IVA, Grade B, Class 3, except for those provisions required of the contractor. For additional information, see Warnings & Applications.
- Look for the Red Pin®... the mark of genuine Crosby quality.

G-2140 / S-2140 Alloy Bolt Type Anchor Shackles

Nominal Shackle Size (in)	Working Load Limit (t)	Stock No.			Weight Each (kg)	Dimensions (mm)													Tolerance (+/- mm)		
		G-2140	S-2140	G-2140OC		A	B	C	D	E	F	G	H	J	K	L	M	N	A	D	E
3/8	2	1021015	-	-	0.15	16.8	23.1	9.7	11.2	36.6	9.7	45.2	55.1	63.2	26.2	9.7	-	-	1.5	0.3	3.3
7/16	2.67	1021020	-	-	0.22	19.1	26.9	11.2	12.7	42.9	10.4	51.6	63.8	73.9	29.5	11.2	-	-	1.5	0.3	3.3
1/2	3.33	1021029	-	-	0.36	20.6	30.2	12.7	16.3	47.8	11.7	58.7	71.1	83.3	33.3	12.7	-	-	1.5	0.5	3.3
5/8	5	1021038	-	-	0.76	26.9	38.1	17.5	19.6	60.5	14.7	74.7	90.4	106.4	42.9	16.0	-	-	1.5	0.5	3.3
3/4	7	1021047	-	-	1.23	31.8	46.0	20.6	22.6	71.4	17.5	88.9	105.4	126.2	50.8	19.1	-	-	1.5	0.5	6.4
7/8	9.5	1021056	-	-	1.79	36.6	53.1	24.6	25.9	84.1	20.6	102.4	122.4	148.1	57.9	22.4	-	-	1.5	0.5	6.4
1	12.5	1021065	-	-	2.57	42.9	60.5	26.9	29.2	95.3	23.4	119.1	136.9	166.6	68.3	25.4	-	-	1.5	0.5	6.4
1-1/8	15	1021074	-	-	3.75	46.0	68.3	31.8	31.8	108.0	26.4	131.1	149.9	189.7	73.9	28.7	-	-	1.5	0.5	6.4
1-1/4	18	1021083	-	-	5.31	51.6	76.2	35.1	35.6	119.1	29.5	146.1	169.9	209.6	82.6	32.8	-	-	1.5	0.8	6.4
1-3/8	21	1021092	-	-	7.18	57.2	84.1	38.1	38.9	133.4	32.5	162.1	183.1	232.7	92.2	36.1	-	-	3.3	0.8	6.4
1-1/2	30	1021110	1021129	1262407	8.52	60.5	91.9	41.1	41.4	146	35.3	175	196	254	98.6	38.9	-	-	3.3	0.8	6.4
1-3/4	40	1021138	1021147	1262416	15.4	73.2	106	57.2	50.8	178	44.5	224	237	313	127	46.7	-	-	3.3	0.8	6.4
2	55	1021156	1021165	1262425	23.6	82.6	122	61.0	57.2	197	50.8	258	264	347	146	52.8	-	-	3.3	0.8	6.4
2-1/2	85	1021174	1021183	1262434	43.5	105	148	79.2	69.9	267	66.5	324	345	455	184	68.8	-	-	6.4	0.8	6.4
3	120	1021192	-	1262443	81	127	165	92.2	82.6	330	76.2	371	384	546	200	79.2	-	-	6.4	1.0	6.4
3-1/2	† 150	1021218	-	1262452	120	133	203	111	95.3	372	95.3	432	448	632	229	91.9	102	46	6.4	0.3	6.4
4	† 175	1021236	-	1262461	153	140	229	116	108	368	102	457	517	652	254	102	102	46	6.4	0.3	6.4
4-3/4	† 200	1021234	-	-	209	184	267	127	121	386	116	529	611	706	279	121	102	46	6.4	0.3	6.4
5	† 250	1021243	-	-	276	216	305	143	127	470	123	600	632	828	330	127	102	46	4.0	0.3	1.8
6	† 300	1021252	-	-	362	213	330	154	152	475	124	629	666	871	330	149	102	46	4.0	0.3	1.8
7*	† 400	1021478	-	-	500	210	356	184	178	572	165	660	728	1022	330	152	102	46	6.4	0.3	6.4

4.5:1 Design Factor for sizes 2 through 21 metric tons, 5.4:1 Design Factor for sizes 30 through 175 metric tons, 4:1 Design Factor for 200 through 400 metric tons. Maximum Proof Load is 2 times the Working Load Limit. *Cast alloy steel, †Furnished with round head bolts with a handle. For Working Load Limit reduction due to side loading applications, see Warnings & Applications.





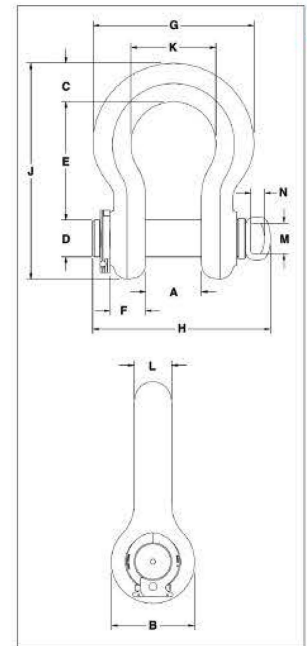
SHACKLES

1

G-2140E



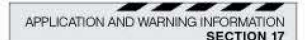
- Quenched & Tempered.
- Alloy bows, alloy bolts.
- Meets performance requirements of Grade 8 shackles.
- Working Load Limit is permanently shown on every shackle.
- 200, 250, and 300 metric ton shackle bows are Dimetcoted®; Pins are Dimetcoted and painted red.
- Approved for use at -40° C (-40° F) to 204° C (400° F).
- Shackles are Quenched & Tempered and can meet DNV impact requirements of 42 Joules (31 ft-lb) at -20° C (-4° F).
- All sizes are individually proof tested to 2.0 times the Working Load Limit.
- Shackles are provided as follows:
 - Serialized bolt and bow
 - Material certification (chemical)
 - Magnetic particle inspected
 - Certification must be requested at time of order
- Meets or exceeds all requirements of ASME B30.26 including identification, ductility, design factor, proof load and temperature requirements. Importantly, these shackles meet other critical performance requirements including impact properties and material traceability, not addressed by ASME B30.26.
- Type Approval certification in accordance with ABS 2016 Steel Vessel Rules and 2016 ABS Guide for Certification of Lifting Appliances. Certificates available when requested at time of order and may include additional charges.
- G-2140E meets the performance requirements of Federal Specification RR-C-271G, Type IVA, Grade B, Class 3, except for those provisions required of the contractor.
- Look for the Red Pin®... the mark of genuine Crosby quality.



G-2140E Alloy Easy-Loc Shackles

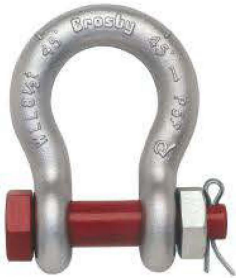
Nominal Shackle Size (in)	Working Load Limit (t)	Stock No.	Weight Each (kg)	Dimensions (mm)													Tolerance (+/- mm)	
				A	B	C	D +/- .02	E	F	G	H	J	K	L	M	N	A	E
4-3/4	200	1021475	208	184	267	127	121	386	116	529	587	706	279	121	101	45.7	6.4	6.4
5	250	1021484	271	216	305	143	127	470	114	600	617	829	330	127	101	45.7	6.4	6.4
6	300	1021493	359	213	330	154	152	475	124	629	646	871	330	149	101	45.7	6.4	6.4

4:1 Design Factor. Maximum Proof Load is 2 times the Working Load Limit. For Working Load Limit reduction due to side loading applications, see Warnings & Applications.

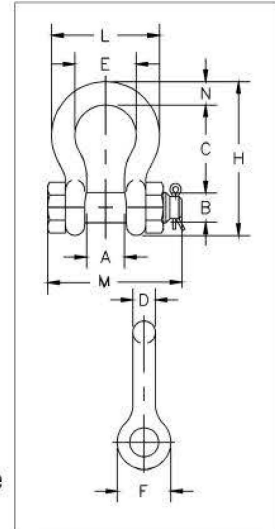




G-2130 / S-2130



- Working Load Limit and Grade 6 permanently shown on every shackle.
- Forged, Quenched & Tempered, with alloy bolts.
- Hot-dip galvanized (G) or self colored (S). 85, 120, and 150-metric ton shackles are all hot-dip galvanized bows and the bolts are Dimetcoated® and painted red.
- Sizes 3/8 and below are mechanically galvanized.
- Fatigue rated to 20,000 cycles at 1-1/2 times the Working Load Limit (1/3t - 55t).
- Approved for use at -40° C (-40° F) to 204° C (400° F).
- Meets or exceeds all requirements of ASME B30.26.
- Shackles 85 metric tons and larger are individually proof tested to 2.0 times the working load limit.
- Type Approval certification in accordance with ABS 2016 Steel Vessel Rules ABS Guide for Certification of Lifting Appliances available. Certificates available when requested at time of order and may include additional charges.
- 3.1 Certification as standard available for charpy and statistical proof test from 3.25t up to 25 tons to DNV 2.7-1 and EN13889.
- Crosby 3.25t through 25t G-2130OC anchor shackles are type approved to DNV Certification Notes 2.7-1-Offshore Containers. These Crosby shackles are statistical proof and impact tested to 42 Joules (31 ft-lb) min. avg. at -20° C (-4° F). The tests are conducted by Crosby and 3.1 test certification is available upon request.
- All other 2130 shackles can meet charpy requirements of 42 Joules (31 ft-lb) avg at -20° C (-4° F) when requested at time of order.
- Meets the performance requirements of Federal Specification RR-C-271G, Type IVA, Grade A, Class 3, except for those provisions required of the contractor.
- Look for the Red Pin®... the mark of genuine Crosby quality.



G-2130 / S-2130 Bolt Type Anchor Shackles

Nominal Size (in)	Working Load Limit (t)	Stock No.			Weight Each (kg)	Dimensions (mm)											Tolerance (+/- mm)	
		G-2130	S-2130	G-2130OC		A	B	C	D	E	F	H	L	M	N	C	A	
3/16	0.33 ‡	1019464	-	-	.03	9.7	6.4	22.4	4.9	15.2	14.2	37.3	24.9	32.8	4.85	1.50	1.50	
1/4	0.5	1019466	-	-	.05	11.9	7.9	28.7	6.4	19.8	15.5	46.7	32.5	39.6	6.35	1.50	1.50	
5/16	0.75	1019468	-	-	.10	13.5	9.7	31.0	7.9	21.3	19.1	53.0	37.3	46.2	7.85	1.50	1.50	
3/8	1	1019470	-	-	.15	16.8	11.2	36.6	9.7	26.2	23.1	63.0	45.2	55.1	9.65	1.50	1.50	
7/16	1.5	1019471	-	-	.22	19.1	12.7	42.9	11.2	29.5	26.9	74.0	51.5	63.8	11.2	3.30	1.50	
1/2	2	1019472	1019481	-	.36	20.6	16.0	47.8	12.7	33.3	30.2	83.5	58.5	71.1	12.7	3.30	1.50	
5/8	3.25	1019490	1019506	1262013	.62	26.9	19.1	60.5	16.0	42.9	38.1	106	74.5	90.4	17.5	3.30	1.50	
3/4	4.75	1019515	1019524	1262022	1.23	31.8	22.4	71.5	19.1	51.0	46.0	126	89.0	105	20.6	3.30	1.50	
7/8	6.5	1019533	1019542	1262031	1.79	36.6	25.4	84.0	22.4	58.0	53.0	148	102	122	24.6	6.35	1.50	
1	8.5	1019551	1019560	1262040	2.28	42.9	28.7	95.5	25.4	68.5	60.5	167	119	137	26.9	6.35	1.50	
1-1/8	9.5	1019579	1019588	1262059	3.75	46.0	31.8	108	28.7	74.0	68.5	190	131	150	31.8	6.35	1.50	
1-1/4	12	1019597	1019604	1262068	5.31	51.5	35.1	119	31.8	82.5	76.0	210	146	170	35.1	6.35	1.50	
1-3/8	13.5	1019613	1019622	1262077	7.18	57.0	38.1	133	35.1	92.0	84.0	233	162	183	38.1	6.35	3.30	
1-1/2	17	1019631	1019640	1262086	8.62	60.5	41.4	146	38.1	98.5	92.0	254	175	196	41.1	6.35	3.30	
1-3/4	25	1019659	1019668	1262095	15.4	73.0	51.0	178	44.5	127	106	313	225	246	57.0	6.35	3.30	
2	35	1019677	1019686	-	23.7	82.5	57.0	197	51.0	146	122	348	253	275	61.0	6.35	3.30	
2-1/2	55	1019695	1019702	-	44.6	105	70.0	267	66.5	184	145	453	327	345	79.5	6.35	6.35	
3	† 85	1019711	-	-	70	127	82.5	330	76.0	200	165	546	365	384	92.0	6.35	6.35	
3-1/2	† 120 ‡	1019739	-	-	120	133	95.5	372	92.0	229	203	626	419	432	105	6.35	6.35	
4	† 150 ‡	1019757	-	-	153	140	108	368	104	254	229	653	468	451	116	6.35	6.35	

6:1 Design Factor. Maximum Proof Load is 2 times the Working Load Limit. For Working Load Limit reduction due to side loading applications, see Warnings & Applications.
 † Individually Proof Tested with certification. ‡ Furnished with eye bolts for handling.





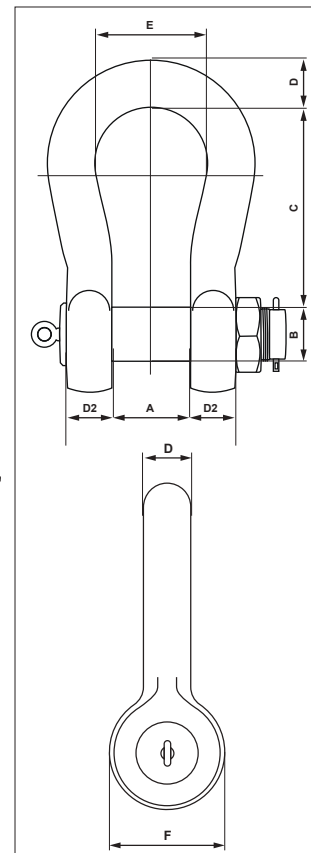
S-2135 / S-2145



- Trusted Crosby quality.
- Embossed Angle Indicators included.
- Meets performance requirements of Grade 8 shackles.
- 5:1 Design Factor.
- Individually proof loaded to 2 times the Working Load Limit.
- S-2135 and S-2145 shackles are available with aluminum paint and are not galvanized.
- Operating temperature range -20° C (-4° F) to 200° C (392° F) for S-2135 and S-2145.
- Material inspection certificate Type 3.1 according to EN 10204.
- DNV type approved: DNVGL-ST-0377 and DNVGL-ST-0378.
- Meets performance requirements of federal specification RR-C-271F, except for those provisions required of the contractor.
- Meets or exceeds all requirements of ASME B30.26.
- S-2135CT COLD TUFF® available from 85t to 400t with an operating temperature range of -60°C (-76°F) up to +200°C (392°F).
- DNV witness proof testing available on request for all sizes and models.
- Magnetic Particle Inspection available on request for all sizes and models.
- Look for the Red Pin® ... the mark of genuine Crosby quality.

SHACKLES

1



S-2135 / S-2145 Bolt Type Anchor Shackles

Frame Size (in)	Working Load Limit (t)	Stock No	Weight (kg)	Dimensions (mm)								
				A	+/- 0	B	C	D	D2	E	F	
S-2135												
3	85	1205009	78	127	+6 / -0	83	330	85	80	190	162	
3 1/2	120	1205018	115	144	+6 / -0	95	380	95	89	238	200	
4	150	1205027	162	165	+8 / -0	108	385	105	100	275	230	
4 3/4	200	1205036	240	180	+8 / -0	125	450	120	110	280	270	
5	250	1205045	306	205	+10 / -0	140	520	130	115	305	290	
6	300	1205054	368	205	+10 / -0	150	530	140	120	305	315	
7	400	1205063	602	230	+10 / -0	175	575	160	160	325	365	
7 1/4	500	1205234	735	250	+12 / -0	185	650	180	160	350	385	
8	600	1205243	969	275	+13 / -0	205	650	200	185	375	430	
8 1/4	700	1205252	1091	300	+15 / -0	215	650	210	200	400	440	
8 1/2	800	1205261	1106	300	+15 / -0	220	650	210	200	400	450	
9 1/2	1000	1205270	1476	340	+17 / -0	240	700	240	240	420	500	
10	1250	1205279	1955	360	+18 / -0	270	750	260	225	450	570	
11	1500	1205288	2327	360	+18 / -0	290	800	280	225	450	610	
S-2145												
3	120	1205072	78	127	+6 / -0	83	330	85	80	190	162	
3 1/2	150	1205081	115	144	+6 / -0	95	380	95	89	238	200	
4	175	1205090	162	165	+8 / -0	108	385	105	100	275	230	

Maximum Proof Load is 2.0 times the Working Load Limit.

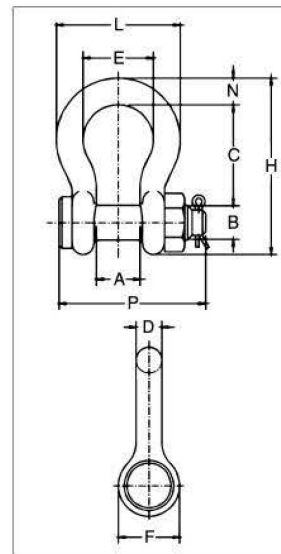




G-2130CT / G-2140CT



- Forged, Quenched & Tempered, with alloy bolt.
 - G-2130CT - carbon steel
 - G-2140CT - alloy steel
- Working Load Limit permanently shown on every shackle.
- Individually serialized with certification.
- Fatigue Rated (G-2130CT only).
- Shackles 25t and larger are RFID equipped.
- All sizes are individually proof tested to 2.0 times the Working Load Limit.
- Finish is inorganic zinc primer.
- Bow and bolt are certified to meet Charpy impact testing of 42 Joules (31 ft-lb) min. avg. at -20° C (-4° F).
- Individually magnetic particle inspected with certification.
- Type Approval and certification in accordance with DNV 2.7-1 Offshore Containers, and Rules for Certification of Lifting Appliances, DNV-OS-E101 and are produced in accordance with DNV MSA requirements, including required documents.
- DNV certified minimum design temperature -4° F. May be used at -50° F (-45° C) in non DNV applications.
- Meets the performance requirements of Federal Specification RR-C-271G Type IVA:
 - G-2130CT - Grade A, Class 3, except for those provisions required of the contractor.
 - G-2140CT - Grade B, Class 3, except for those provisions required of the contractor.



G-2130CT COLD TUFF® Bolt Type Anchor Shackles

Nominal Shackle Size (in)	Working Load Limit (t)	Stock No.	Weight Each (kg)	Dimensions (mm)										Tolerance (+/- mm)	
				A	B	C	D	E	F	H	L	N	P	A	C
3/4	4.75	1260568	1.23	31.8	22.4	71.5	19.1	51.0	46.0	126	89.0	20.6	108	1.50	6.35
7/8	6.5	1260577	1.76	36.6	25.4	84.0	22.4	58.0	53.0	148	102	24.6	120	1.50	6.35
1	8.5	1260586	2.57	42.9	28.7	95.5	26.2	68.5	60.5	167	119	26.9	137	1.50	6.35
1-1/8	9.5	1260595	3.75	46.0	31.8	108	28.7	74.0	68.5	190	131	31.8	150	1.50	6.35
1-1/4	12	1260604	5.31	51.5	35.1	119	32.8	82.5	76.0	210	146	35.1	168	1.50	6.35
1-3/8	13.5	1260613	6.85	57.0	38.1	133	35.1	92.0	84.0	233	162	38.1	183	3.30	6.35
1-1/2	17	1260622	9.43	60.5	41.4	146	39.1	98.5	92.0	254	175	41.1	195	3.30	6.35
1-3/4	25	1260633	15.4	73.0	51.0	178	46.7	127	106	313	225	57.0	233	3.30	6.35

5.4:1 Design Factor. Maximum Proof Load is 2 times the Working Load Limit. For Working Load Limit reduction due to side loading applications, see Warnings & Applications.

G-2140CT COLD TUFF® Alloy Bolt Type Anchor Shackles

Nominal Shackle Size (in)	Working Load Limit (t)	Stock No.	Weight Each (kg)	Dimensions (mm)										Tolerance (+/- mm)	
				A	B	C	D	E	F	H	L	N	P	A	C
1-1/2	30	1260801	9.43	60.5	41.4	146	38.9	98.6	91.9	254	175	41.1	196	3.3	6.4
1-3/4	40	1260812	15.4	73.2	50.8	178	46.7	127	106	313	224	57.2	237	3.3	6.4
2	55	1260823	23.6	82.6	57.2	197	52.8	146	122	347	258	61.0	264	3.3	6.4
2-1/2	85	1260834	43.5	105	69.9	267	68.8	184	148	455	324	79.2	345	6.4	6.4
3	120	1260843	81	127	82.6	330	79.2	200	165	546	371	92.2	384	6.4	6.4
3-1/2	† 150	1260852	120	133	95.3	372	91.9	229	203	632	432	111	448	6.4	6.4
4	† 175	1260861	153	140	108	368	102	254	229	652	457	116	517	6.4	6.4
4-3/4	† 200	1260870	204	184	121	397	114	279	267	743	533	152	539	6.4	6.4
5	† 250	1260889	272	216	127	508	114	330	305	889	622	165	576	6.4	6.4

5.4:1 Design Factor on 30t through 175 metric tons. 4:1 Design Factor on 200 metric tons and larger. Maximum Proof Load is 2 times the Working Load Limit for all sizes.





QUIC-TAG™

Crosby®

THE NEWEST ADDITION TO CROSBY'S RFID TAG FAMILY

Industry standards require periodic performance inspections to make sure lifting equipment is performing to specified levels.

The Crosby QUIC-TAG™ makes the inspection process more efficient, and its unique design can be retrofitted on numerous products.

- Easy, fast, and secure attachment
- Engineered for extreme durability and strength with a low profile design
- Resistant to harsh environmental conditions including exposure to UV rays, water chemical exposure and temperatures up to 85°C (185°F)
- Compatible with the Crosby QUIC-CHECK® Inspection and Identification System
- 13.5 MHz operating frequency
- The most cost effective RFID tag offered by Crosby



QUIC-CHECK®



Shown actual size:

